

WML Consulting BIM Capabilities

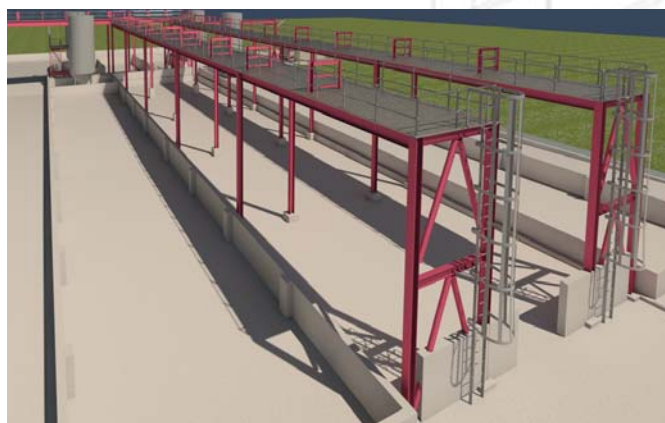
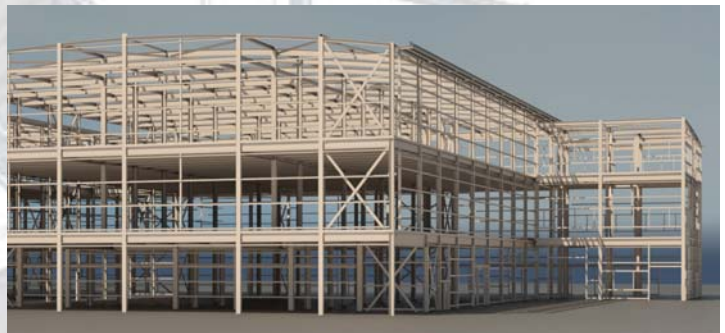
To ensure Clients receive best value by providing fully integrated, innovative designs WML have fully embraced Building Information Modeling, routinely using Revit.

With the use of packages such as Revit by the Design Team, benefits include:

- Ensuring that a project design fully meets the Clients brief from an early stage by greater visualization and engagement with Clients
- Reduction in design costs by early integration of Architectural, Structural and M&E design, eliminating the need for redesign in a coordination exercise
- Ensures most cost effective structural solution is chosen by integration of the drawing process with the structural frame analysis and member design.

The combined construction value of projects WML have successfully detailed using Revit is approximately £180m, with schemes including:

- Ballistic and Public Order Training Facility, West Yorkshire Police (value £30m)
- Lakeside Academy (value £15m)
- North Chadderton School, Oldham BSF (value £20m)
- Factory Extension for Michelin, Stoke-on-Trent (value £5m)
- Retail Units, Partington (value £5.4m)
- Data Centre, London (value £7.5m)
- Warehouse facility for Thor Specialities, Northwich (value £2m)
- Nursery Building for Keele University (value £2m)
- Primark, Kingston (value £23m)
- CCEK City West Housing (value £10m)
- Sleeperz Hotel, Liverpool (£10m)
- Crossacres Primary School (value £1.5m)
- Northumbrian Police (value £1.5m)
- Wilmslow High School (value £1.68m)
- Kings Road Primary School (value £3.9m)
- Entrance Pods and Office Extension for High Rise Tower Blocks, Wirral (value £21m)
- Framework for EFA funded Free School Programme (value £12m)



Leading into the future

Building Information Modeling of a project provides Clients with data that is integrated and usable. Data is made available for sharing in a BIM format that can then be efficiently utilised to help Clients make informed decisions regarding their future activities.

The importance of BIM is recognized by the Government's new Construction Strategy, announced in May 2011, setting out the intention to require collaborative 3D BIM, on all Government funded projects by 2016.

WML are ideally placed to lead BIM schemes due to our early adoption of this cultural shift in building design and detailing.